

# TYPE "RC"

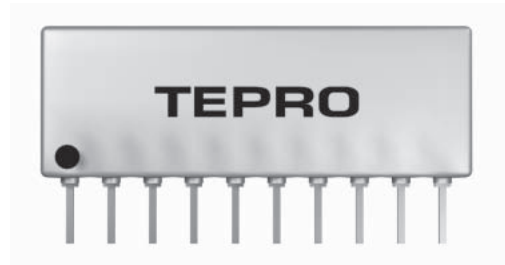
# TEPRO



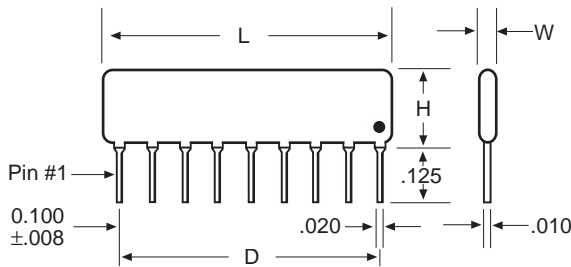
## SIP CONFORMALLY COATED RESISTOR / CAPACITOR NETWORKS

### FEATURES:

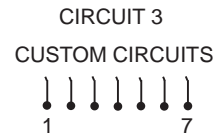
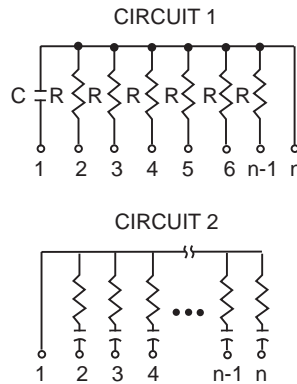
- Standard resistance range: 10Ω to 2.2 Meg.
- Standard tolerances: ±1%, 2%, 5%
- Temperature coefficient: < 50Ω to 100ppm  
50Ω to 1 MegΩ ±50ppm  
1 MegΩ to 20 MegΩ 200ppm
- Single resistor wattage ratings up to 0.5 watt
- Multiple resistance values available within a single package
- Capacitors available: NPO: 10pf - 4700pf, ±5 & ± 10%  
X7R: 500pf - 0.1μf, ±10 & ± 20%
- Diodes available



### STANDARD CIRCUITS



FRONT MARKING DOT INDICATES POSITION OF PIN #1.



### STANDARD CONFIGURATIONS AND ELECTRICAL SPECIFICATIONS:

TEPRO TYPE	NUMBER PINS	DIMENSIONS (Inches)				POWER PER RESISTOR (Watts)	RESISTANCE RANGE PER RESISTOR	
		L MAX.	W ±.01	H ±.01	D ±.01		MIN.	MAX.
RC-04	4	.400	.130	.350	.300	0.125	10	2.2M
RC-05	5	.500	.130	.350	.400	0.125	10	2.2M
RC-06	6	.600	.130	.350	.500	0.125	10	2.2M
RC-07	7	.700	.130	.350	.600	0.125	10	2.2M
RC-08	8	.800	.130	.350	.700	0.125	10	2.2M
RC-09	9	.900	.130	.350	.800	0.125	10	2.2M
RC-10	10	1.000	.130	.350	.900	0.125	10	2.2M
RC-11	11	1.100	.130	.350	1.000	0.125	10	2.2M
RC-12	12	1.200	.130	.350	1.100	0.125	10	2.2M

### HOW TO ORDER:

